

# Where and how do the TOOsonix handpieces produce the focal point?

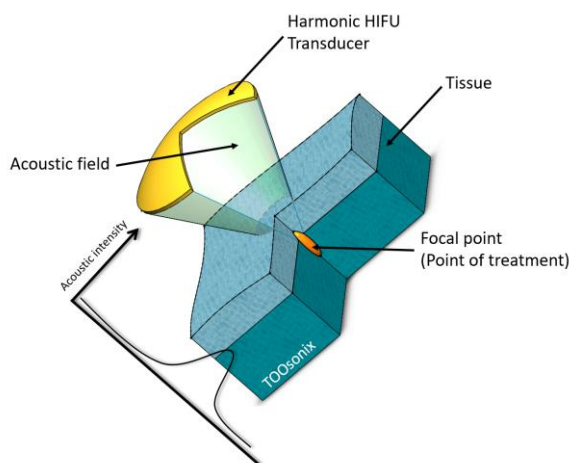
Handpieces from TOOsonix are based on a so-called single element transducer technology. This means that each shot from the system produces a single focal point at a pre-determined fixed depth.

The handpieces are defined by their nominal focal depth, which describes the distance from the surface of the transducer head to the geometrical focal point.

When operating the handpieces, they are water-filled, have a layer of ultrasound gel for acoustic coupling between the handpiece and substrate, and often radiate into media with varying acoustic characteristics.

This changes the actual obtained focal depth. Based on experience, the two TOOsonix standard handpieces are supplied with nominal focal depth that extends approximately 0.8 mm and 2.5 mm into typical skin tissue.

Other focal depths can be made on request



**Fig. 1.** Nominal HIFU focal point defined by the geometrical distance from the surface of the transducer head.

## Contact

TOOsonix A/S  
Agern Allé 1  
DK-2970 Horsholm  
Denmark

info@toosonix.com  
www.toosonix.com